

BLUelf Prestained Protein Ladder

Catalog Number. PM008-0500 Size: 500 μ L
Catalog Number. PM008-0025 Size: 25 μ L
Lot Number: 00156028

Product Qualification

Specifications: The product must show 13 major protein bands when separated by SDS-PAGE electrophoresis on a OnePAGE Sonic Gel with Tris-Glycine buffer, 12% Bis-Tris Gel with MES buffer, or 4-12% Bis-Tris Gel with MES buffer.

Results: Meet specifications.

Specification: Any pre-stained contaminant band with molecular weight below 160 kDa must be less than 10% in intensity to the nearest major band.

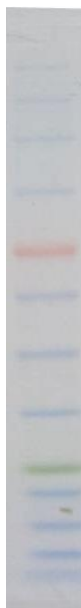
Result: Meets specification.

Specification: Pre-stained protein band from lot being tested must migrate within 1/2 bandwidth from prior lot.

Result: Meets specification..

All products are for research use only.

Caution: Not intended for human or animal diagnostic or therapeutic USES.



Yi-Hsing, Yao
Inspector, Quality
Issued on 2020/12/02

5 μ l, OnePAGE Sonic Gel with Tris-Glycine buffer,