

# Certificate of Analysis



## BLUelf Prestained Protein Ladder

Catalog Number: PM008-0500, Size: 500 ul

Catalog Number: PM008-0025, Size: 25 ul

Lot Number: 15156028

### Product Qualification

Specifications: The product must show 13 major protein bands when separated by SDS-PAGE electrophoresis on a OnePAGE Sonic Gel with Tris-Glycine buffer, 12% Bis-Tris Gel with MES buffer, or 4-12% Bis-Tris Gel with MES buffer.

Results: Meet specifications.

Specification: Any pre-stained contaminant band with molecular weight below 160 kDa must be less than 10% in intensity to the nearest major band.

Result: Meets specification.

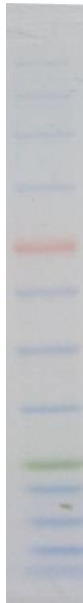
Specification: Pre-stained protein band from lot being tested must migrate within 1/2 bandwidth from prior lot.

Result: Meets specification..

---

All products are for research use only.

Caution: Not intended for human or animal diagnostic or therapeutic USES.



---

Yi-Hsing, Yao

Inspector, Quality

Issued on 2021/01/27

5ul, OnePAGE Sonic Gel with Tris-Glycine buffer,