

Certificate of Analysis

Nimble juice

Speedy Protein gel stain

Part No./Catalog No. NJ001-0010

Lot Number: 80102080

Size: 10 ml (100X)

Product Qualification

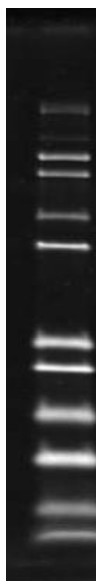
Specifications:

The staining method of Nimble Juice was following the rapid method as below:

First, Protein gel (SDS-PAGE) has been immersed in fix solution (100 ml, 40% (v/v) ethanol and 7% (v/v) acetic acid), microwave to boil and agitate at room temperature for 15 minutes, and then discard the fix solution.

Second, the gel stains with 1X working stain solution (before used, Nimble Juice was diluted 1: 100 with distilled water), and agitate at room temperature for 30 minutes, then discard the working staining solution. The stained gel has exposure under UV light.

Results: Meet specifications.



The pattern was exposure under the UV equipment. And tested by Mark12™ Unstained Standard (Invitrogen, 6ul/ well)

All products are for research use only.

Caution: Not intended for human or animal diagnostic or therapeutic uses.